

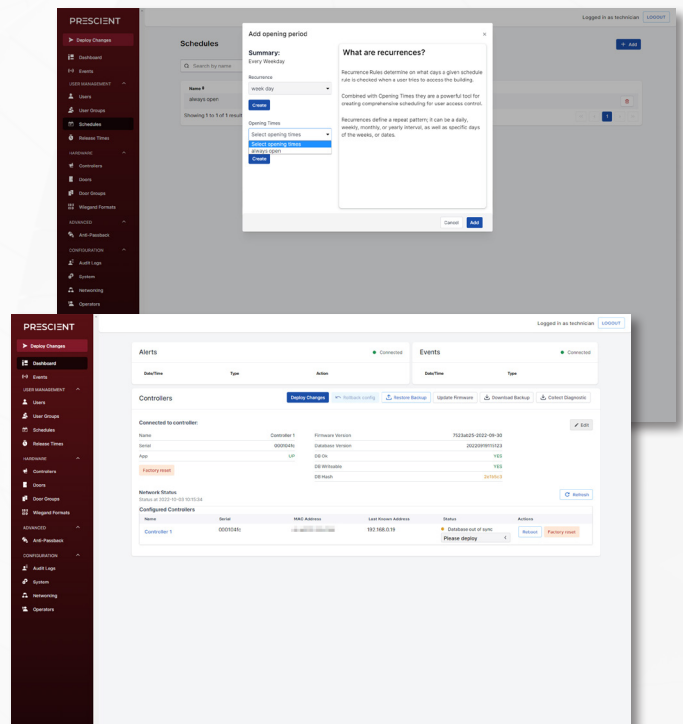


PRESCIENT

User Interface

The Prescient UI is an intuitive, user friendly and powerful browser-based interface designed for easy, live access control management. The Prescient UI comes integrated with DN4 access controllers, allowing quick and seamless networking of devices for large-scale access control solutions.

- ▶ Browser-based design makes for quick and accessible setup and use, no independent app or program installation needed
- ▶ Main dashboard allows monitoring and responding to events, alerts and controller status in real-time
- ▶ Make and deploy system changes quickly and from any screen while operating



Simple to set up and use with tooltips and initial config wizard



Comes integrated with all DN4 access controllers



Anti-passback system configurable



Regular software/firmware updates



Powerful and highly configurable card data format engine



Australian design, development and support

